



WESTERNEX
supplying mining & exploration worldwide

MAINTENANCE

Electrical

CATALOGUE



Westernex is ISO certified for a quality management system for the procurement, warehousing and distribution of consumables.

Electrical

Wire Bell Twisted Pair

- » Cores: 2
- » Material: V-90 PVC



SKU	COLOUR	SIZE
1304-01033	Red / White	200 meter
1304-01032	Red / White	500 meter

Cable Ties

- » High Quality 66UL Nylon
- » UL94V-2 Flammable rating
- » UV-stabilised to resist material breakdown and to increase service life



SKU	COLOUR	SIZE	UOM
1303-00100	Black	150 x 3.6mm	Hundred
1303-00101	Black	200 x 4.8mm	Hundred
1303-00102	Black	250 x 4.8mm	Hundred
1303-00103	Black	300 x 4.8mm	Hundred
1303-00104	Black	370 x 4.8mm	Hundred
1303-00105	Black	450 x 8.0mm	Hundred
1303-00106	Black	550 x 8.0mm	Hundred

Extension Lead Heavy Duty

Yellow heavy duty lead. 10A, clear socket with safety skirt & clear plug. Quality branded, virgin copper and high grade UV-stable polymer coating.



SKU	COLOUR	SIZE
1304-01013	Yellow	10 meter
1304-01014	Yellow	15 meter
1304-00006	Yellow	20 meter

Extension Lead Heavy Duty 15amp

High visibility 15 Amp cable and wide blade earth terminal makes this extension lead ideal for caravans, boats, welders and all high power applications.



SKU	COLOUR	SIZE
1304-01018	Orange	10 meter
1304-01019	Orange	15 meter
1304-00350	Orange	20 meter

Electrical

Power Board 4 Outlets On/Off Switch

- » 4 outlet switched
- » 0.9m lead
- » 10A white switched powerboard



SKU
1304-01036

Power Board 4 Outlets with Surge

- » 4 outlet
- » 0.9m lead
- » 10A white S150j surge protection powerboard



SKU
1304-01035

Insulation Tape

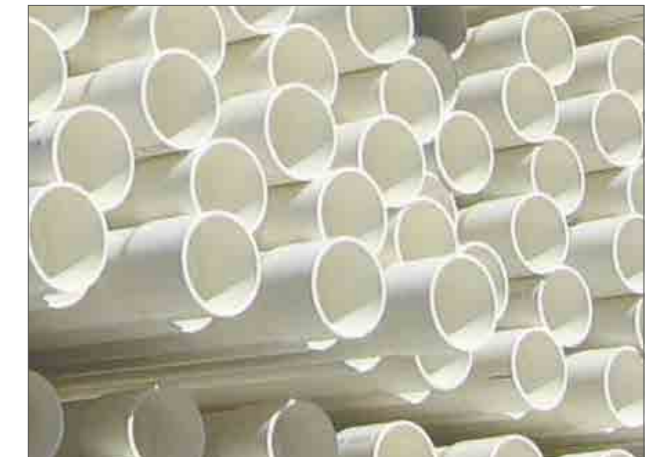
- » Generic PVC insulation tape
- » 18mm wide
- » 20m roll



SKU	COLOUR	SIZE
1214-00006	Assorted Pack of 10	18mm x 20 meter
1304-00604	Blue	18mm x 20 meter
1304-00605	Red	18mm x 20 meter
1304-00606	White	18mm x 20 meter
1304-01034	Black	18mm x 20 meter

Communications Conduit

Rigid wall PVC conduits are used by Australia's growing telecommunications industry. PVC is ideally suited for electrical conduits, both for above and below ground cables as it is non-conductive, lightweight and easy to install. These conduits are used in buried applications and in buildings either fully exposed or encased in concrete floors.



SKU	SIZE	LENGTH
1905-11005-32	32mm	4m
1905-11005-50	50mm	4m
1905-11005-63	63mm	4m
1905-11005-80	80mm	6m
1905-11005-100	100mm	6m

Communications Conduit Chart

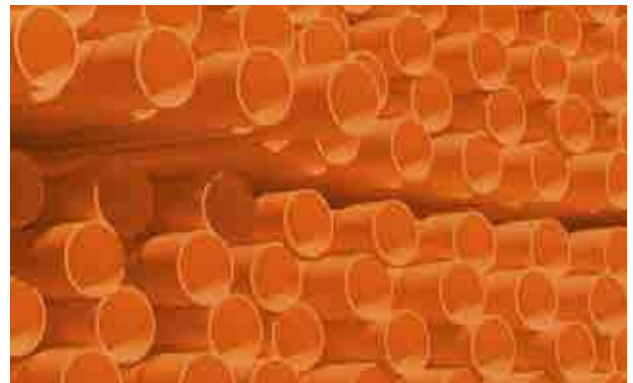
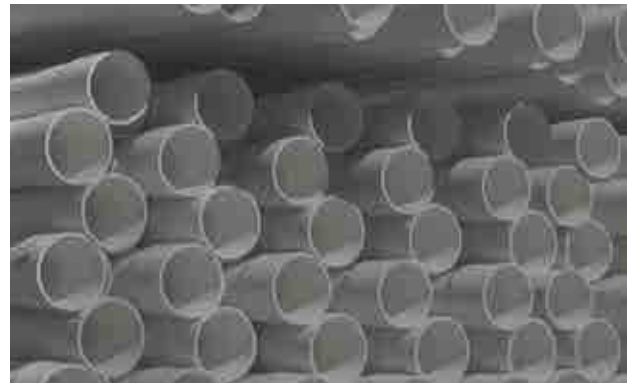
Pipe Size		Comms			Pack/Crate	
Nom. Bore (mm)	Mean OD (mm)	Mean ID (mm)	Mean Wall (mm)	Ave. Weight (kg/m)	Length (mtr)	Pack Qty
32	31.85	27.45	2.2	0.31	4	360
50	49.85	43.95	2.95	0.64	4	195
63	63	56.6	3.2	0.86	4	202
80	85.1	82.1	1.5	2.28	4	104
100	109.5	104.7	2.4	3.8	4	67

Please note that the figures shown are subject to change and are correct at the time this document was printed.

Electrical

PVC-U Electrical Conduit Solvent Weld (SWJ)

Westernex offers a range of electrical conduit and ducting, manufactured in accordance with AS/NZS 2053, suitable for both commercial and domestic applications. PVC is ideally suited for electrical conduits, both for above and below ground cables as it is non-conductive, lightweight and easy to install. These conduits are used in buried applications and in buildings either fully exposed or encased in concrete floors. Whilst AS/NZS determines the most common length at 4m long.



SKU	SIZE	LENGTH	TYPE
1905-11004-20	20mm	4m	Medium Duty Grey
1905-11004-25	25mm	4m	Medium Duty Grey
1905-11004-32	32mm	4m	Medium Duty Grey
1905-11004-40	40mm	4m	Medium Duty Grey
1905-11004-50	50mm	4m	Medium Duty Grey
1905-11003-20	20mm	4m	Heavy Duty Orange
1905-11003-32	32mm	4m	Heavy Duty Orange
1905-11003-40	40mm	4m	Heavy Duty Orange
1905-11003-50	50mm	4m	Heavy Duty Orange
1905-11003-63	63mm	4m	Heavy Duty Orange
1905-11003-80	80mm	4m	Heavy Duty Orange
1905-11003-100	100mm	4m	Heavy Duty Orange
1905-11003-125	125mm	4m	Heavy Duty Orange
1905-11003-150	150mm	4m	Heavy Duty Orange
1905-11003-200	200mm	4m	Heavy Duty Orange

W
Maintenance

PVC-U Electrical Conduit Solvent Weld (SWJ) Chart

Pipe Size		Medium Duty Grey			Heavy Duty Orange			Pack/Crate	
Nom. Bore (mm)	Mean OD (mm)	Mean ID (mm)	Mean Wall (mm)	Ave. Weight (kg/m)	Mean ID (mm)	Mean Wall (mm)	Ave. Weight (kg/m)	Length (mtr)	Pack Qty
20	19.85	15.05	1.75	0.17	16.35	2.4	0.19	4	600
25	24.85	19.65	1.95	0.2	20.95	2.6	0.26	4	600
32	31.85	26.25	2.2	0.31	27.45	2.8	0.37	4	360
40	39.85	33.45	2.55	0.52	34.75	3.2	0.52	4	270
50	49.85	42.85	2.95	0.64	43.95	3.5	0.75	4	195
63	62.85	---	---	---	58.85	4	1.07	4	202
80	88.9	---	---	---	84.1	4.8	1.87	4	104
100	114.3	---	---	---	108.3	6	3.08	4	67
125	140.2	---	---	---	132.8	7.4	4.65	4	45
150	160.3	---	---	---	151.8	8.5	6.13	4	33
200	225.3	---	---	---	215.8	9.5	14.5	4	15

Please note that the figures shown are subject to change and are correct at the time this document was printed.



Perth Main Warehouse

66 Truganina Rd, Malaga, Western
Australia 6090
P: +61 (0) 8 9209 8500
E: perth@westernex.com.au

Kalgoorlie Warehouse

18 Kinclaven Way, Broadwood,
Kalgoorlie, Western Australia 6430
P: +61 (0) 8 9091 1152
E: kalgoorlie@westernex.com.au

Brisbane Warehouse

14 Hasp St, Seventeen Mile Rocks
Queensland 4073
P: +61 (0) 7 3376 2422
E: brisbane@westernex.com.au

Mt Isa Warehouse

13 Ryan Rd, (Entry off Davis Rd)
Mt Isa, Queensland 4825
P: +61 (0)7 4743 2122
E: mtisa@westernex.com.au